

Visit Us Online

For more information about Basalite paving stones, retaining walls, accessories, patterns or installation instructions, visit us online at basalite.com.

Offered by:



605 Industrial Way
Dixon, CA 95620
800-776-6690

11888 West Linne Road
Tracy, CA 95376
800-776-6690

1201 Golden State Blvd
Selma, CA 93662
559-896-0753

CALIFORNIA • COLORADO • IDAHO • NEVADA • OREGON • WASHINGTON • BRITISH COLUMBIA

www.basalite.com



©2012 Basalite® Concrete Products, LLC. All trademarks ® are registered trademarks.
The U.S. Green Building Council Member logo is a trademark owned by the U.S. Green Building Council and is used by permission.



BASALITE®
Interlocking Paving Stones
TURFSTONE





TURFSTONE

Turfstone™ has long been a favorite of landscape architects and engineers for areas requiring a "supported turf". It's attractive "filigree" design makes it an attractive and permanent solution for emergency access areas, embankments, spillways, and environmentally sensitive parking areas.

Turfstone has the option of being filled with grass or aggregates depending on the project's drainage requirements. Each block contains eight cells, each cell measures 3.5" X 3.5" for planting.

This versatile permeable pavement system can meet LEED® credit requirements.



Eligible LEED® Credits

The information below represents possible LEED® credits where Basalite® SRI colors and permeable pavement systems may contribute. Actual credits granted will vary by project and/or product manufacturer. For more information please visit www.usgbc.org.

Innovation and Design (ID)

Credit 1.1 and 1.2
Structural Advantages and Life-Cycle Benefits

Materials and Resources (MR)

Credit 2.1 and 2.2
Construction Site Waste Management
Credit 4.1 and 4.2
Recycled Content
Credit 5.1 and 5.2
Regional Materials

Sustainable Sites (SS)

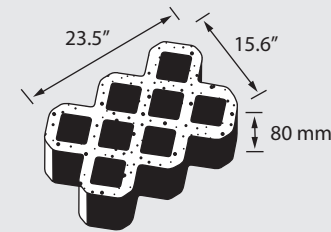
Credit 6.1 and 6.2
Stormwater Design
Credit 7.1 and 7.2
Heat Island Effect

Water Efficiency (WE)

Credit 1.1, 1.2, 2, 3.1, 3.2
Water Efficiency

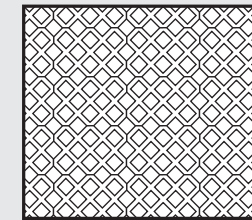
Above and Cover : Turfstone in custom color.

Specifications

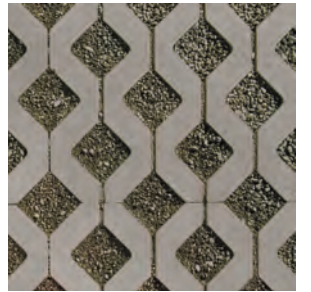


Weight: 57 lbs
Units/Pallet: 48
Sq. Ft./Pallet: 122

Patterns



Colors



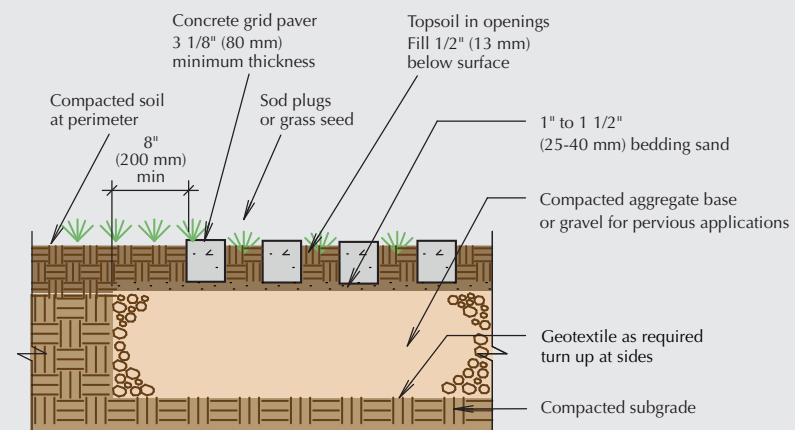
Grey

NOTE: Custom colors are available by special order, please allow sufficient lead time. For more information please contact your local Basalite Representative.

Printed colors shown in this brochure may vary from actual product colors. We recommend color selection be made from actual product samples.

Typical Turfstone Installation*

1. Excavate unsuitable, unstable or unconsolidated subgrade material and compact the area which has been cleared. Backfill and level with dense graded aggregate suitable for base material (typically 3 to 6 inches for pedestrians or emergency access areas or as directed by site engineer/architect/landscape architect.
2. Install edge restraint using concrete curb, concrete toe or edging.
3. Place bedding course of sharp normal weight screening or concrete sand to a uniform depth of approximately 1" leveled to grade.
4. Install Basalite Interlocking Pavers hand tight with joints approximately 1/8".
5. Where required, cut stones with an approved cutter to fit accurately.
6. Tamp paving stones with mechanical vibrator uniformly level true to grade and free of movement.



NOTES:

1. Base thickness varies with traffic, climate, and subgrade.
2. Minimum base thickness: 6" (150 mm) residential driveways, 8" firelanes and parking lots.
3. Not intended for heavy traffic applications.

For more information please contact your local Basalite representative or Civil Engineer.

*The installation instructions and illustrations shown are a basic overview of paver installation methods. Because of the variety of applications, please refer to the Basalite® installation guide or visit us online at basalite.com.

