



ARROWHEAD[®]

INTERLOCKING PAVING STONES

Private Residence



Private Residence

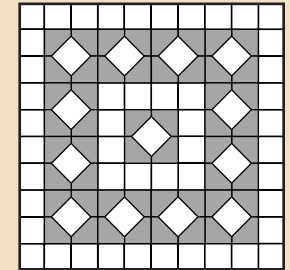
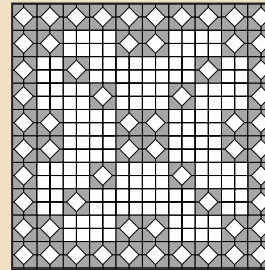
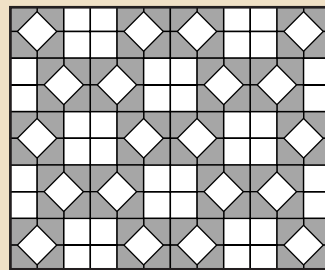
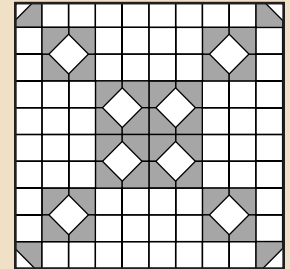
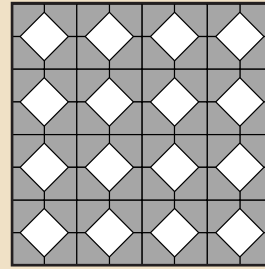
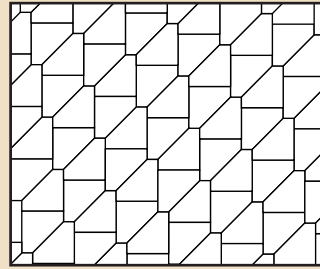
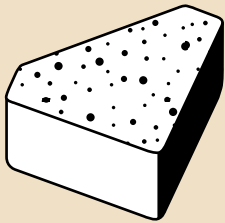


Private Residence



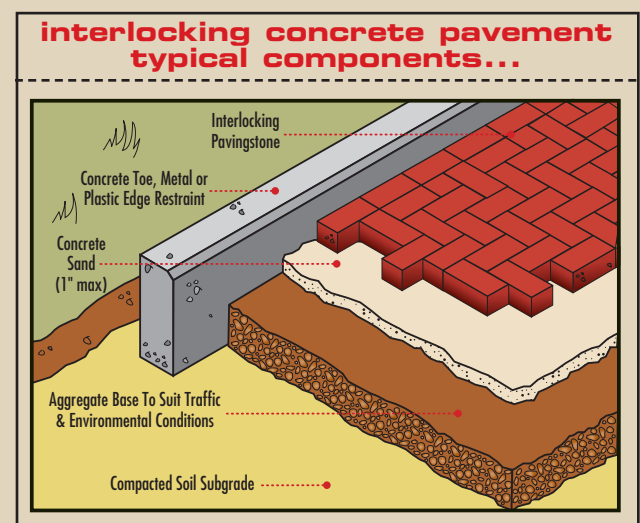
ARROWHEAD® SPECIFICATIONS

thickness	stone size	approx. weight	approx. stones/pallet	approx. lbs./pallet	approx. stones/sq.ft.	approx. sq.ft./pallet
60 mm	6" x 1.63"	5.2 lb.	512	2688	6	85



INSTALLATION

1. Excavate unsuitable, unstable or unconsolidated subgrade material and compact the area which has been cleared. Backfill and level with dense graded aggregate suitable for base material (typically 3 to 6 inches for pedestrian and light vehicular traffic, 6 to 12 inches for heavy vehicular and industrial) or as otherwise directed by site engineer/architect/landscape architect.
2. Install edge restraint using concrete curb, concrete toe or Dimex Edge Pro.
3. Place bedding course of sharp normal weight screening or concrete sand to a uniform depth of approximately 1" leveled to grade.
4. Install Basalite Interlocking Pavers hand tight with joints approximately 1/8".
5. Where required, cut stones with an approved cutter to fit accurately.
6. Tamp paving stones with mechanical vibrator uniformly level true to grade and free of movement.
7. Fill voids in joints by sweeping dry fine sharp sand over pavers.



11888 W. Linne Rd.
Tracy, CA 95376

355 Greg Street
Sparks, NV 89431

4900 Race Street
Denver, CO 80216

1300 East Franklin Rd.
Meridian, ID 83642

605 Industrial Way
Dixon, CA 95620

Phone: 1-800-266-3670

209-833-3670

Fax: 209-833-6039



BA131 2500 CP 11/10/02